



Road safety  
and  
logistics  
equipment

---

2024

# Catalog

## Road safety and logistics equipment



Founded in 2004, AR.Trade s.r.l. is a trading company operating in the sector of rubber items, in particular wheels for manual handling, pads, and accessories for garage equipment, bumpers for commercial vehicles, road safety equipment and more.

We have always been a dynamic player in the search for new products, proposing innovative solutions able to adapt to the needs and budgets of our customers, thus obtaining in a short time a wide national and European recognition.

Over the years, we have constantly expanded our range by responding quickly to market demands, offering both import and national customized production solutions.

Our always present sales department, the simplicity of the operational structure, and the direct involvement of the owners allow speed in decision making, availability, and flexibility that translate into a better service.

Today we are moving towards a system that offers global and advantageous solutions for all our partners, hence the "ROAD SAFETY AND LOGISTICS EQUIPMENT" line, a complete range of accessories and consumables for road safety, traffic, parking, events, logistics, transport, and large distribution.

AR.Trade s.r.l. products are suitable for the industrial and civil sector, for construction, and for public administrations. The main objective is to increase safety not only on roads, highways, and construction sites but also internal environments, flat complexes, factories, garages, parking lots, and warehouses according to the new concepts of safety and the needs of employees, which are interpreted by listening to manufacturers and operators to anticipate the changes and the expected responses of the market.

### Speed bumps

**page 06** ↗

Speed ramps are made of rubber, also suitable for heavy traffic. Modular and complete with side terminals, 2 models available.

### Berlin cushions

**page 10** ↗

Square-shaped rubber speed cushions that "distinguish" between drivers and cyclists, usually used in 30km/h Zones.

### Traffic islands

**page 12** ↗

Mini rubber traffic islands, ideal for separating lanes and creating road separations.

### Lane separators

**page 14** ↗

Rubber lane separators. Ideal for separating reserved lanes, creating funnels, and other similar functions.

### Flexible bollards

**page 16** ↗

Flexible traffic bollards are usually installed in spaces where micro collisions may occur.

### Cable protectors

**page 18** ↗

Rubber protectors with PVC cover for the passage and protection of cables and pipes.

# Catalog

## Road safety and logistics equipment

### Heavy duty fire hose ramps

**page 22** ↗

Heavy duty hose ramp allows heavy vehicles to safely and smoothly transition. Ideal for fire engines and fire protection vehicles.

### Trench cover road plates

**page 23** ↗

Trench cover is designed to provide a safe means for light vehicles. Very handy tool for construction site work. Strong and able to protect open areas on the footpath.

### Ramps

**page 24** ↗

On and off ramps for curbs and rubber thresholds with non-slip surface, for vehicles, bicycles and pedestrians.

### Buffers and bumpers for loading points

**page 39** ↗

Are used as protection against impacts. Suitable for the protection of walls, buildings, and equipment.

### Rubber sheets and curtain dock shelter

**page 40** ↗

Rubber mats are suitable for general uses in the industrial and civil sectors. The perimeter joints for isothermal docks guarantee the thermal seal of the loading doors.

### Rubber bumpers for trucks and trailers

**page 42** ↗

Rubber bumpers and tipper plates. Are used as protection against impacts. Suitable for the protection of trucks and trailers.

### Parking stops

**page 26** ↗

Front delimiter to block cars in parking areas, they are recommended for both outdoor and indoor environments such as garages and parking lots.

### Edge protectors and bumpers

**page 28** ↗

Rubber solutions for walls and corners, designed to protect against impacts in transit and passage areas.

### Plastic barriers

**page 30** ↗

Polyethylene road barriers are suitable for use on roads and construction sites.

### Rubber caps

**page 44** ↗

Rubber end-caps and profiles for section bars. Used on industrial vehicles.

### Rubber coverings

**page 44** ↗

Rubber covering and conduits for cables.

### Elastic rubber bands

**page 45** ↗

Elastic rubber bands for various uses.

### New jersey

**page 32** ↗

New jersey polyethylene barriers and lane dividers. They are ideal for urban construction sites and to delimit areas or direct traffic.

### Heavy bases for road signs and poles

**page 34** ↗

Heavy bases for road signs are stable elements used to replace load from concrete and sandbags.

### Road mirrors

**page 35** ↗

Circular street mirrors with visor, ideal for dangerous crossings, exits of parking lots, blind corners.

### Wheel chocks and wedges

**page 46** ↗

They stop the wheels safely to park the vehicle in the right position and avoid contact with other structures.

### Stretch film

**page 53** ↗

The stretch film allows a good fixing of the pallets and allows stability during transport.

### Carts for the manual handling

**page 54** ↗

Range of manual handling carts to help your business safely transport goods and loads around the workplace.



# Speed bumps



Rubber bumps that slow down traffic suitable for public administrations, parking lots, garages, flat complexes, factories and civil constructions. The road bumps are made of central modular elements and lateral terminal elements to facilitate the passage of drivers and pedestrians.

Easy to transport and of quick installation by means of mechanical or chemical fixing elements to be inserted in the appropriate holes (fixing elements not included available on request).

## RH model

Speed bumps in black and yellow rubber with bright reflectors. Combined yellow and black colors for maximum visibility.

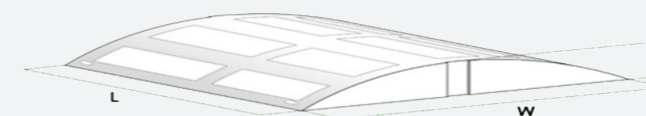
## RH Europe model

Speed bumps in black and yellow rubber with bright reflectors. Combined yellow and black colors for maximum visibility.

## Fixing kit

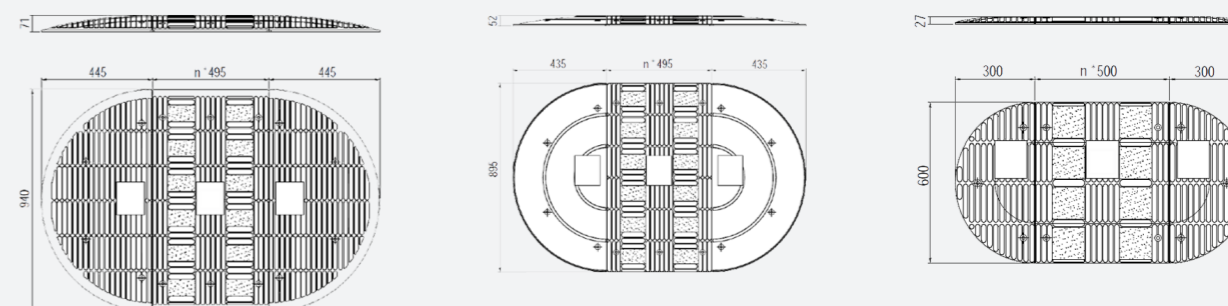
Each module can be fixed to the ground with fastening elements that allow a quick and easy installation on site. Available on request.

## RH model



Code	Element	Type	L [cm]	W [cm]	H [cm]	Fixing holes [n]	Kit Fixing [mm]	Max speed [Km/h]
RH-600	central	-	50	60	3	4	10x100	50
RH-T600	end	M+F	22	60	3	3	10x100	50
RH-900	central	-	50	90	5	6	10x100	40
RH-T900	end	M+F	27	90	5	3	10x100	40
RH-1100	central	-	54,5	110	7	6	10x140	30
RH-T1100	end	M+F	25	110	7	4	10x140	30

## RH Europe model



Code	Element	Type	L [cm]	W [cm]	H [cm]	Fixing holes [n]	Kit Fixing [mm]	Max speed [Km/h]
RH-600-CE	central	-	60	50	3	4	10x100	50
RH-T600-CE	end	M+F	60	30	3	3	10x100	50
RH-900-CE	central	-	49,5	89,5	5	6	10x100	40
RH-T900-CE	end	M+F	89,5	43,5	5	4	10x100	40
RH-1100-CE	central	-	94	49,5	7	6	10x140	30
RH-T1100-CE	end	M+F	94	45,5	7	4	10x140	30

Features >>



# Speed bumps



Rubber bumps that slow down traffic suitable for public administrations, parking lots, garages, flat complexes, factories and civil constructions. The road bumps are made of central modular elements and lateral terminal elements to facilitate the passage of drivers and pedestrians. Easy to transport and of quick installation by means of mechanical or chemical fixing elements to be inserted in the appropriate holes (fixing elements not included available on request).



## DH Model

Speed bumps in black and yellow rubber with bright reflectors. Combined yellow and black colors for maximum visibility.



## DH-SP Model

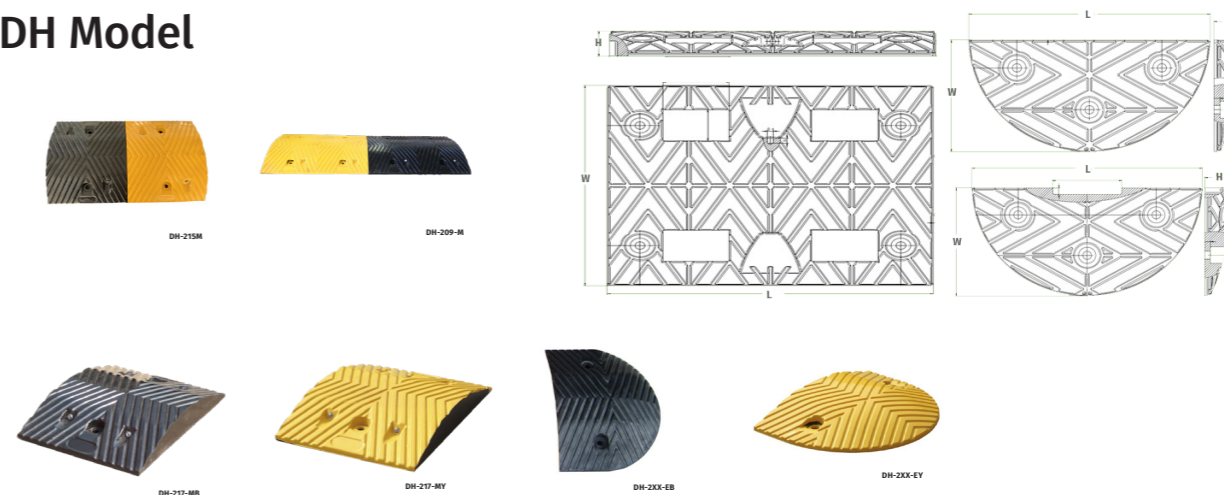
Speed bumps in black and yellow rubber with white arrows reflectors. Combined yellow and black colors for maximum visibility.



## Fixing kit

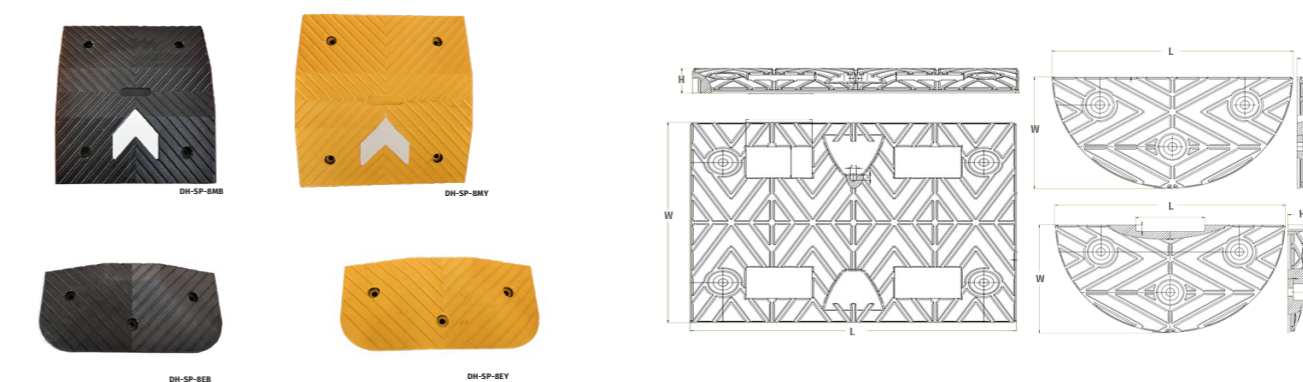
Each module can be fixed to the ground with fastening elements that allow a quick and easy installation on site. Available on request.

## DH Model



Code	Element	L [cm]	W [cm]	H [cm]	Fixing holes [n]	Max speed [Km/h]	Color
DH-217-MY	central	25	35	5	2	50	yellow
DH-217-MB	central	25	35	5	2	50	black
DH-215-M	central	50	35	5	4	50	black + yellow
DH-209-M	central	100	35	5	8	50	black + yellow
DH-2XX-EY	end	25	35	5	2	50	yellow
DH-2XX-EB	end	25	35	5	2	50	black

## DH-SP Model



Code	Element	L [cm]	W [cm]	H [cm]	Fixing holes [n]	Max speed [Km/h]	Color
DH-SP-8MY	central	50	55	7,5	4	30	yellow
DH-SP-8MB	central	50	55	7,5	4	30	black
DH-SP-8EY	end	25	55	7,5	3	30	yellow
DH-SP-8EB	end	25	55	7,5	3	30	black

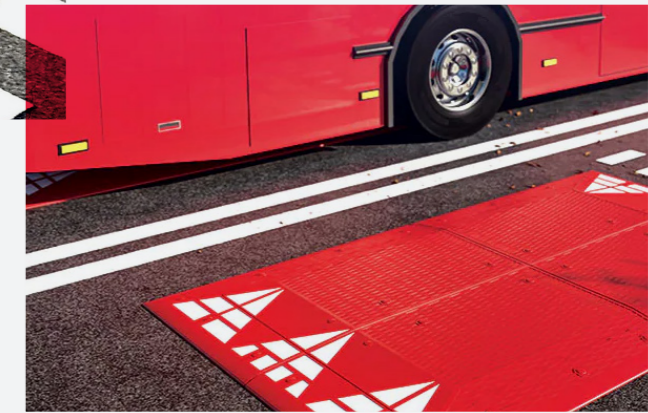
## Features



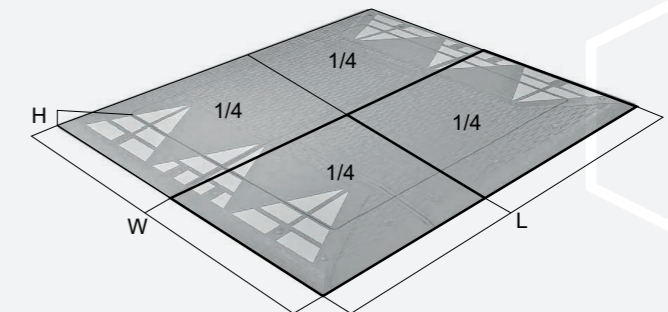
# Berlin cushions



Rubber speed bumpers are usually used in 30 km / h areas. They have the purpose of slowing down the transit speed of cars, without limiting buses, emergency vehicles, and two-wheeled vehicles.



## Europe model

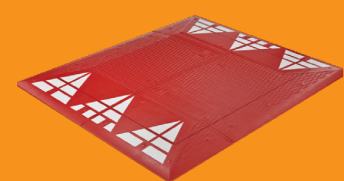


### SMALL element

Code	Element	L [cm]	W [cm]	H [cm]	Weight [kg]	Color
BHE-100R4	4pcs (90x100cm)	200	180	6,5	100	red/white
BHE-100B4	4pcs (90x100cm)	200	180	6,5	100	black/white

### LARGE element

Code	Element	L [cm]	W [cm]	H [cm]	Weight [kg]	Color
BHE-150R4	4pcs (90x150cm)	300	180	6,5	140	red/white
BHE-150B4	4pcs (90x150cm)	300	180	6,5	140	black/white



### Europe model

Europe model cushion produced in black or red rubber with white 6-arrow marking. Composed of 4 elements.



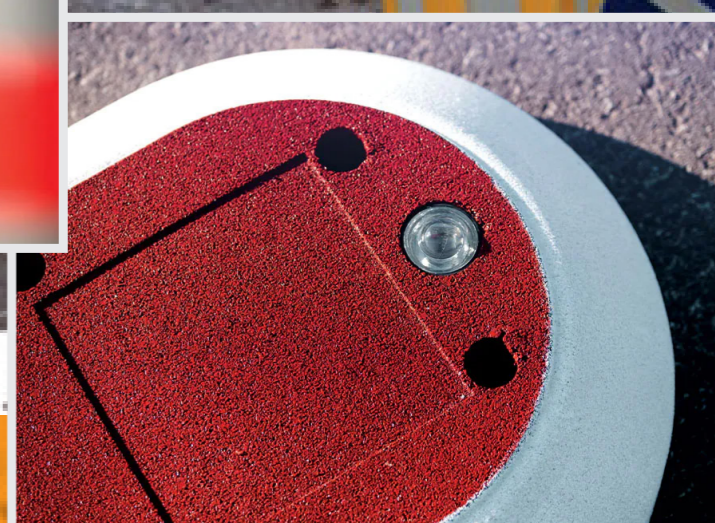
### Fixing kit

Each module can be fixed to the ground with fastening elements that allow a quick and easy installation on site.

Features >>



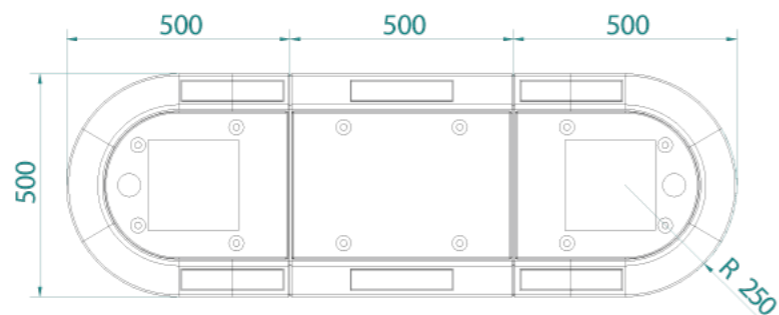
# Traffic islands



Mini traffic islands are composed of elements in rubber granules and are covered with reflective microspheres that increase their visibility at night. Available in both red and white as well as grey and white.

The modular elements allow to quickly create small traffic islands, islands to separate lanes, road separations in parking lots, pedestrian crossings, detours, and protections.

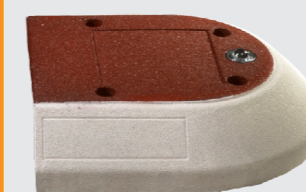
They are resistant to mechanical damage and easy and quick to install using screws (not included available on request).



Code	L [cm]	W [cm]	H [cm]	Kg
DH-IS-R1M	50	50	13	5

Elemet: central  
Reflective elements: microspheres  
Fixing holes: 4

Color:  
●



Code	L [cm]	W [cm]	H [cm]	Kg
DH-IS-R1E	50	50	13	3

Elemet: end  
Reflective elements: microspheres  
Fixing holes: 4

Color:  
●



Code	L [cm]	W [cm]	H [cm]	Kg
DH-IS-G1M	50	50	13	5

Elemet: central  
Reflective elements: microspheres  
Fixing holes: 4

Color:  
●

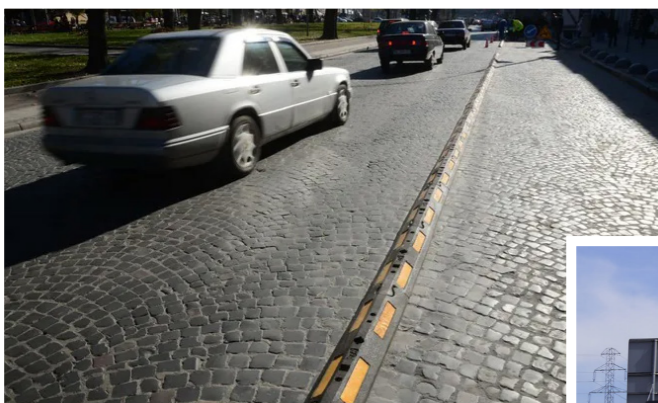


Code	L [cm]	W [cm]	H [cm]	Kg
DH-IS-G1E	50	50	13	3

Elemet: end  
Reflective elements: microspheres  
Fixing holes: 4

Color:  
●

# Lane separators



Lane separators are used to separate and delimit restricted lanes and create funnels. They have a versatile use, also acting as spacers to protect transit areas for people, machinery, and shelving against impact from moving objects. Made of combined yellow and black rubber, with highly reflective inserts for maximum visibility even at night. The height and profile of the elements are such as to not create danger or damage to the vehicles while maintaining sufficient height. Composed of modular elements and side terminals with a T-joint system that allows easy transportation and easy installation. The lane separators can be fixed permanently or temporary by using fixing elements (not included available on request). They also have holes for the installation of any kind of delineators or vertical signs.

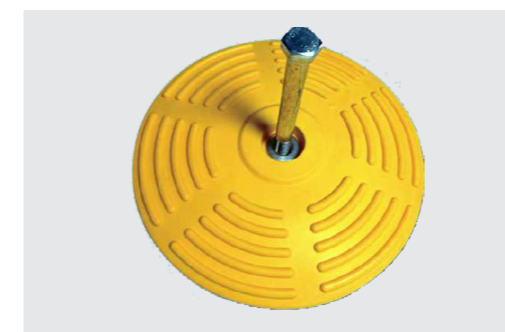


Code	Modulo	L [cm]	W [cm]	H [cm]	Holes [n]	Ø Holes [cm]	Reflective	Weight [Kg]	Color
DH-TS-1MB-CE	central	113	24	8	2	4,5	yellow + black	13,5	
DH-TS-1MY-CE	central	113	24	8	2	4,5	-	13,5	
DH-TS-1EB-CE	end (M+F)	113	24	8	2	4,5	yellow + black	11,5	
DH-TS-1EY-CE	end	113	24	8	2	4,5	-	11,5	

Features



## Road separator spherical cap



Code	Diam [cm]	H [cm]	Fixing holes	Color
RCS -300	30	3	M16x180	yellow

Color:





# Flexible bollards



The super flexible bollard posts are designed as delineators to separate both road/cycle and pedestrian paths.

These are high visibility and safety barriers, which effectively direct and divert traffic.

They are usually used where the signaling is not sufficient to guarantee safety conditions in the traffic channeling and in spaces where micro-collisions may be more likely to occur such as on motorways, in toll booth lanes, at road junctions, and on urban roads.

Made of special polymers with high impact resistance, they are extremely flexible.

In the event of a collision, the posts fold and quickly regain their original shape, without at the same time causing damage to vehicles.

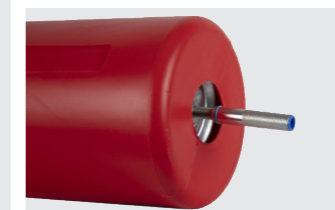
The installation and fixing to the ground, using special bolts (not included, available on request), is simple and safe on both asphalt and concrete.

Available with fixed and articulated base.

## Fixed base with screw and washer



Code	H [cm]	Diam [cm]	Reflective tape [cm]
DH-FB-75N	75	20	2x 10



Fixing kit included

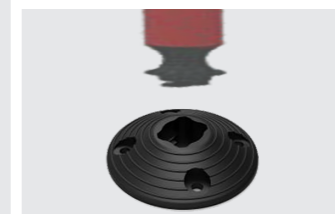
Color:



## Flexible base



Code	H [cm]	Diam [cm]	Reflective tape [cm]
DH-TS -1P	90	8	3x 5,5



Base included, fixing kit on request

Color:



## Flexible base



Code	H [cm]	Diam [cm]	Reflective tape [cm]
DH-FB-2	70	20	2x 10



Base included

Color:



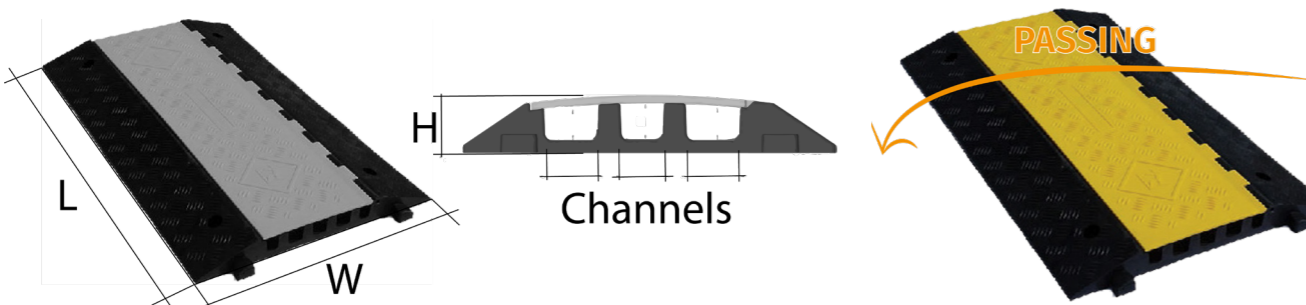
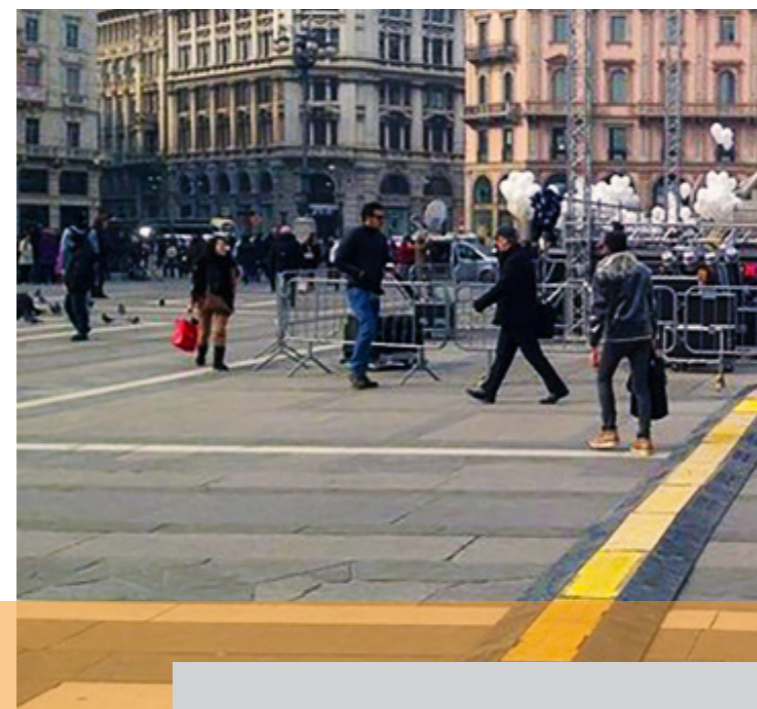
# Cable protectors

Rubber cable protectors ramps with PVC cover for the passage and protection of cables and pipes. Consisting of central and corner modular elements that allow you to change direction, they are assembled simply and quickly thanks to the front couplings.

They can be placed on the ground and fixed with plugs (not included available on request). The cable protectors are made of highly elastic vulcanized rubber, which makes them resistant to the stress caused by the passage of heavy vehicles and construction sites.

The upper part, made of yellow PVC, can be opened to allow the positioning of the cables inside the grooves.

The visible raised surface increases the anti-slip effect.



## 1 CHANNEL

Element: central

Code	L [cm]	W [cm]	H [cm]	Channels [cm]
DH-CPC-2	900	76	1,6	1,9x0,95

Load capacity: 200 Kg



## 1 CHANNEL

Element: central

Code	L [cm]	W [cm]	H [cm]	Channels [cm]
DH-CP-S1M	90	25	6,5	1x 5

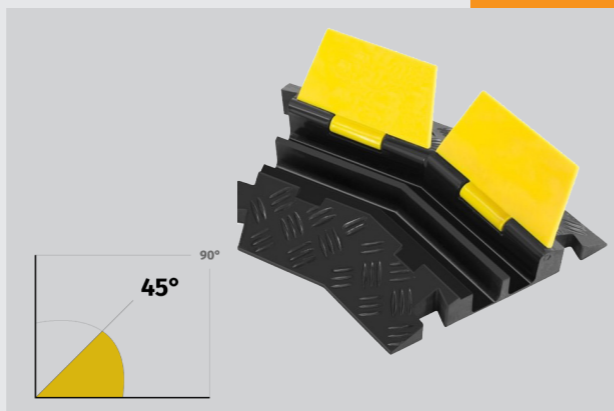
Load capacity: 12 Ton

**2 CHANNELS**

Element: central

Code	L [cm]	W [cm]	H [cm]	Channels [cm]
DH-CP-S2M	100	25	4,5	2x 3,2x3,4

Load capacity: 12 Ton

**2 CHANNELS**

Element: left/right curve

Codice	W [cm]	H [cm]	Channels [cm]
DH-CP-S2L	25	4,5	2x 3,2x3,4
DH-CP-S2R	25	4,5	2x 3,2x3,4

Load capacity: 12 Ton

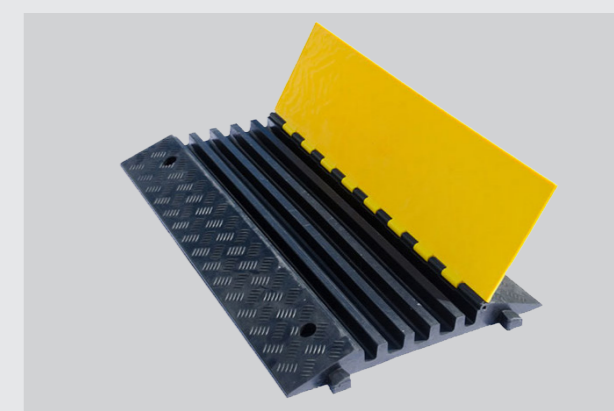
Es.: **1 PCS = 45°** - 2 PCS = 90°**3 CHANNELS**

Element: central

Code	L [cm]	W [cm]	H [cm]	Channels [cm]
DH-CP-6	90	60	7,5	3x 6,5x6,5

Load capacity: 20 Ton

4 HOLES: fixing kit on request (M10x100)

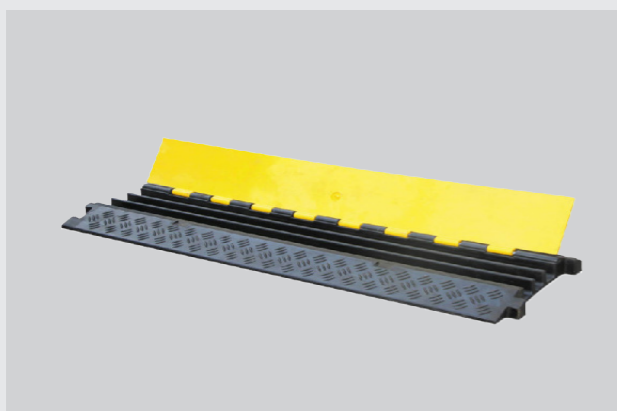
**5 CHANNELS**

Element: central

Code	L [cm]	W [cm]	H [cm]	Channels [cm]
DH-CP-3M	90	55	5,5	2x 2,5x3,0 3x 3,8x3,0

Load capacity: 20 Ton

4 HOLES: fixing kit on request (M10x100)

**3 CHANNELS**

Element: central

Code	L [cm]	W [cm]	H [cm]	Channels [cm]
DH-CP-S3M	90	30	4,5	3x 3,0x3,0

Load capacity: 12 Ton

**3 CHANNELS**

Element: left/right curve

Code	W [cm]	H [cm]	Channels [cm]
DH-CP-S3L	30	4,5	3x 3,0x3,0
DH-CP-S3R	30	4,5	3x 3,0x3,0

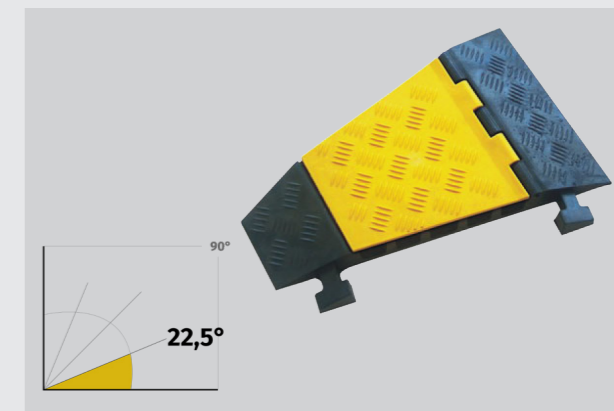
Load capacity: 12 Ton

Es.: **1 PCS = 45°** - 2 PCS = 90°**5 CHANNELS**

Element: central

Code	L [cm]	W [cm]	H [cm]	Channels [cm]
DH-CP-L5M	90	50	5,5	5x 3,8x3,5

Load capacity: 18 Ton

**5 CHANNELS**

Element: left/right curve

Code	W [cm]	H [cm]	Channels [cm]
DH-CP-L5L	50	5,5	5x 4,2x4,2
DH-CP-L5R	50	5,5	5x 4,2x4,2

Load capacity: 18 Ton

Es.: **1 PCS = 22,5°** - 4 PCS = 90°

## Heavy duty fire hose ramps

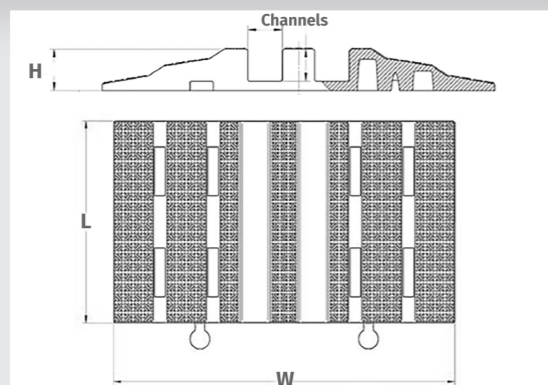


The heavy-duty fire hose ramps protect the cables laid on the transit routes in events or road construction sites.

Composed of modular elements made of vulcanized rubber with a non-slip surface, they are equipped with a practical connection system that allows quick and safe installation.

They protect pipes and hoses from abrasion, crushing, or breakage and allow them to circulate without problems in the transit areas affected by the works.

Equipped with reflective bands, they are highly visible both day and night.



Code	L [cm]	W [cm]	H [cm]	Channels [cm]	Load capacity [ton]	Weight [kg]
DH-CPO-75	50	85	9,0	2x 7,5x7	40	31
DH-CPO-90	30	85	8,5	2x 9x7	20	12
DH-CPO-150	30	101	13,5	2x 15x12	20	22

## Trench cover road plates



The crossing plates are ideal for temporarily covering holes on construction sites.

Made from a single piece of reinforced plastic or fiberglass, with a non-slip surface and rounded edges, they are lightweight and easy to carry.

The reinforced base in the central section allows the temporary transit of vehicles.

In place of the iron sheets traditionally used to cover the holes, they have the advantage of being lighter and not rusting.

Code	L [cm]	W [cm]	H [cm]	Load capacity *[kg]	Weight [kg]	Material
TC-PS120	120	80	4,5	1000	17	HDPE + steel
TC-GC120	120	80	3	500	13	fiberglass
TC-GC160	160	120	2,5	2000	33	fiberglass

\* distributed load over an area 25x25 cm

# Ramps



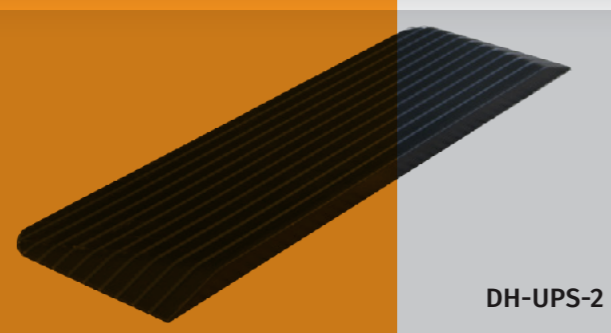
Rubber ramps are used for pedestrian traffic, strollers, wheelchairs, bicycles, motorcycles, and vehicles to overcome slight differences in height in the home environment, apartment buildings, and in urban areas such as thresholds, curbs, sidewalks, elevations, stairs, bumps.

Made of weatherproof hard rubber, with a non-slip surface, they have good shock absorption and are crush resistant.

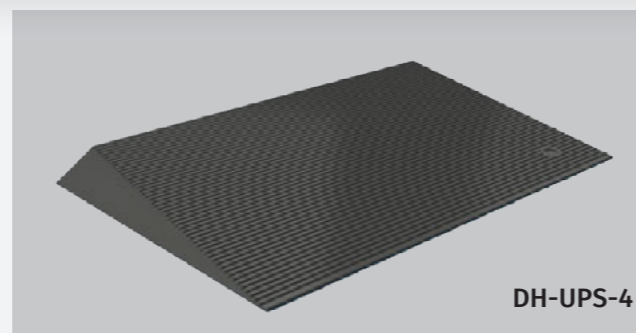
Available in different variants, with central modular elements and side terminals for greater safety, or with three rounded sides.

Also available with yellow reflective inserts for greater visibility at night.

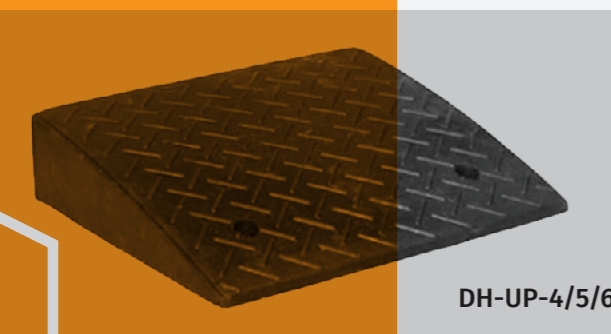
They are easy to transport and install, the installation is quick using anchors (not included, available on request).



DH-UPS-2



DH-UPS-4



DH-UP-4/5/6



DH-UP-1/2/3

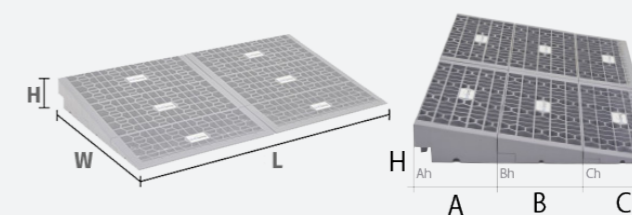
## Rubber model

Code	Element	L [cm]	W [cm]	H [cm]	Fixing holes	Reflective tape
DH-UPS-2	central only	110	32	3,8	-	no
DH-UPS-4	central only	110	42	6,5	-	no
DH-UP-1	central	60	30	10	2	yes
DH-UP-1T	end	30	30	10	2	yes
DH-UP-4	central	60	25	10	2	no
DH-UP-4T	end	25	25	10	2	no
DH-UP-6	central	50	42	11	2	no
DH-UP-5	central	50	30	14	2	no
DH-UP-2	central	60	36	15	2	yes
DH-UP-2T	end	36	36	15	2	yes
DH-UP-3	central	60	45	20	2	yes
DH-UP-3T	end	45	45	20	2	yes

## Plastic model

The threshold ramp is made of plastic and has a non-slip surface.

With its maximum load capacity of 1360 kg, the ramp is not only suitable for wheelchairs, but also for loaded trolleys or similar objects.



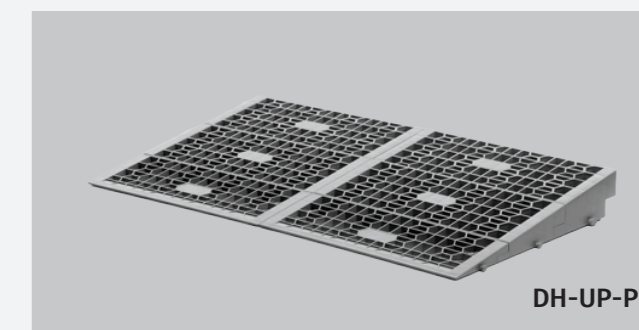
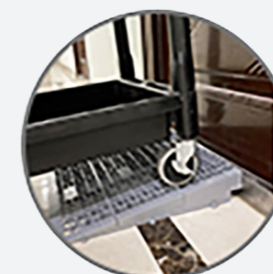
HEIGHTS OF MODULES

Ch = 0-25 mm

Bh = 25-50 mm

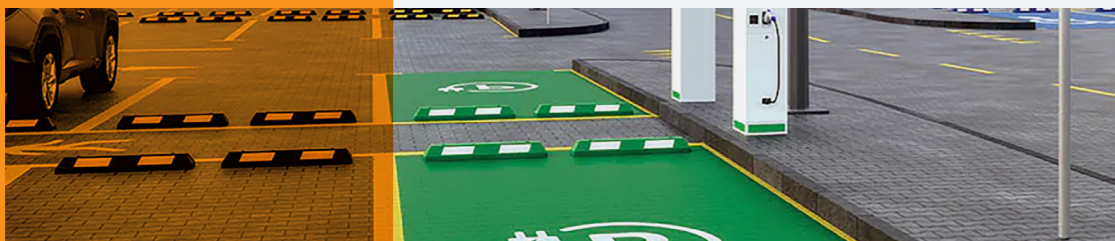
Ah = 50-75mm

Code	Element	L [cm]	W [cm]	H [cm]	A [cm]	B [cm]	C [cm]
DH-UP-PP	3 modules	40,5	46,2	7,5	16	16	14,2



DH-UP-PP

# Parking wheel stops



Front delimiter curbs to stop cars in parking areas, they are recommended for both outdoor and indoor environments such as garages and parking lots. With the installation of the curbs, the cars are blocked at the height of the tires without damage to the bodywork, prevent the invasion of sidewalks and pedestrian paths, protect against collisions with walls or barely visible elements.

The parking wheel stops are made of hard rubber, are weatherproof and have good shock absorption, have reflective inserts that increase visibility.

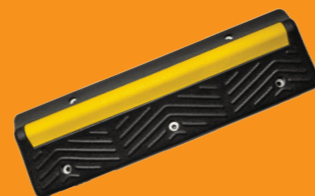
They can be easily installed using plugs (not included, available on request).



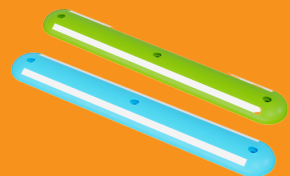
DH-PB- 4/5/9/10



DH-PB-8



DH-PB-15TS



DH-PB- 6G 9G/6U 9U



DH-PB- 6R 9B/6R 9B



DH-PB- 7B 7R



DH-PB- 7G 7U Cars

## Features



## Cars

Code	Color	L [cm]	W [cm]	H [cm]	Hole [n]	Reflective tape
DH-PB-4	black	55	15	10	2 (M10x100)	yellow / white
DH-PB-5	black	90	15	10	2 (M10x100) 3 (M10x100)	white / yellow
DH-PB-9	black	120	15	10	4 (M10x100)	yellow
DH-PB-10	black	182	15	10	4 (M10x100)	yellow / white

Code	Color	L [cm]	W [cm]	H [cm]	Hole [n]	Reflective tape
DH-PB-6B	black	70	15	4,5	3 (M10x100)	white
DH-PB-6R	red	70	15	4,5	3 (M10x100)	white
DH-PB-6G	green	70	15	4,5	3 (M10x100)	white
DH-PB-6U	blue	70	15	4,5	3 (M10x100)	white

Code	Color	L [cm]	W [cm]	H [cm]	Hole [n]	Reflective tape
DH-PB-9B	black	120	15	4,5	3 (M10x100)	white
DH-PB-9R	red	120	15	4,5	3 (M10x100)	white
DH-PB-9G	green	120	15	4,5	3 (M10x100)	white
DH-PB-9U	blue	120	15	4,5	3 (M10x100)	white

Code	Color	L [cm]	W [cm]	H [cm]	Hole [n]	Reflective tape
DH-PB-7B	black	75	12	10	3 (M10x100)	white
DH-PB-7R	red	75	12	10	3 (M10x100)	white
DH-PB-7G	green	75	12	10	3 (M10x100)	white
DH-PB-7U	blue	75	12	10	3 (M10x100)	white

Code	Color	L [cm]	W [cm]	H [cm]	Hole [n]	Reflective tape
DH-PB-8B	black	100	24	8	3 (M10x100)	yellow
DH-PB-8Y	yellow	100	24	8	3 (M10x100)	yellow

## Heavy vehicles

Curb to block buses and heavy vehicles, fixation kit included.

Code	Color	L [cm]	W [cm]	H [cm]	Hole [n]	Reflective tape
DH-PB-15TS	black	100	30	15	5 (M14x165)	yellow

# Edge protectors and bumpers



Solutions intended for impact protection in all types of passage. Installed for transit areas as protection for walls or corners.

Made of rubber to cushion shocks, they feature highly reflective inserts for maximum visibility. Suitable for indoor environments, garages, parking lots, and warehouses, they are ideal for protecting the uprights of corner shelving and pillars, walls, passages, and ramps in areas with heavy vehicle traffic.

They are quick and easy to install using plugs (not included, available on request).



## RUBBER CORNER GUARDS

Corner protectors are made of rubber with high visibility reflective film.

Installation with plugs (not included).

Code	L [cm]	W [cm]	H [cm]
DH-131	80	10	0,8



## RUBBER BUMPER PADS

Rubber bumpers with high visibility reflective film.

Installation with plugs fix M10x100 (not included)

Code	L [cm]	W [cm]	H [cm]
DH-WP-4	100	15	5



## RUBBER BUMPER PADS

Rubber bumpers with high visibility reflective film.

Installation with plugs (not included).

Code	L [cm]	W [cm]	H [cm]
DH-WP-5	80	21	3,5



## PARKING BARRIERS

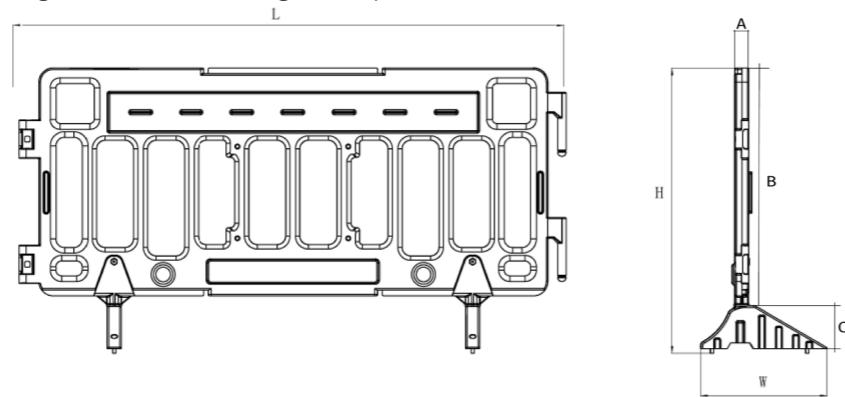
Metal barrier with 40 mm galvanized steel tube and telescopic reinforcement rod.

Supplied with a collapsible and lockable system with a locking padlock.

Code	L [cm]	W [cm]	H [cm]	H2 [cm]
PB-M	68	29	50	41

# Plastic barriers

High-density polyethylene barriers are versatile and suitable for solving various safety situations in temporary construction sites, for traffic control, and for delimiting the passage during events. Durable and robust, the barriers are supplied complete with feet, which make them stable even on uneven ground. Resistant to wear, they are equipped with an integrated male/female connection system that makes it possible to quickly connect several elements without the need for additional accessories. Equipped with a white and red reflective band for greater visibility, they are available in different colors. 360 rubber swivel bases, space savings, with two fixing Customizable with logos or adhesive writings on request.



Code	L [cm]	W [cm]	H [cm]	B [cm]	C [cm]	A [cm]
DH-PFB-4	193	44,6	100	80	20	5

Colore:



Code	L [cm]	W [cm]	H [cm]	B [cm]	C [cm]	A [cm]
DH-PFB-5	112	44	100	80	20	5

Color:



Code	L [cm]	W [cm]	H [cm]	B [cm]	C [cm]	A [cm]
DH-PFB-9	195	44	100	80	20	5

Color:





# New jersey



The polyethylene road barriers are suitable for use on roads, highways, and construction sites.

They are versatile, easy to handle and move and allow you to easily channel road traffic temporarily and divert it quickly.

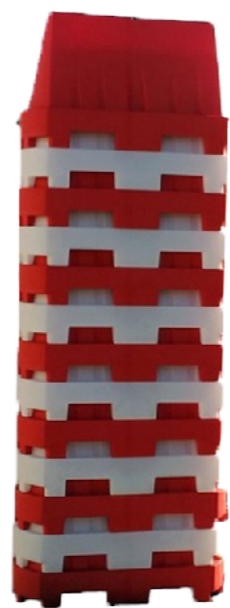
This new jersey model is stackable, an important feature that reduces storage volumes by up to 50%, allows handling by forklifts, and cuts transport costs.

They are modular blocks equipped with an immediate fixing system, with integrated male/female connection to ensure stability, they are equipped with caps for loading and unloading the ballast (water or sand).

Road barriers are resistant to wear, UV rays, and shocks.

The total absence of metal parts ensures maximum safety in the event of an impact.

To ensure greater visibility even at night, reflective applications can be inserted on each side of the barrier.



Code	L [cm]	W [cm]	H [cm]
NJ100R-60	100	40	60
NJ100R	100	40	70

**Color:**



stackable



Code	L [cm]	W [cm]	H [cm]
NJ100B-60	100	40	60
NJ100B	100	40	70

**Color:**



stackable

## Heavy bases for road signs and poles

Perfect for temporary road signs and construction sites, the bases are stackable and designed to house poles and batteries.

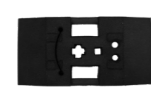
Made of recycled rubber, they are stable and manageable.



Features:



Code	L [mm]	W [mm]	H [mm]	Weight [Kg]	Hole [mm]
BA-15	400	700	114	15	230 x4slot



Features:



Code	L [mm]	W [mm]	H [mm]	Weight [Kg]	Hole [mm]
BA-25	400	700	110	25	2x Ø50 / □40X40-□60X60



Code	L [mm]	W [mm]	H [mm]	Weight [Kg]	Hole [mm]
BA-28	380	760	130	28	3x Ø50 / □40X40-□60X60



**BASE FOR TEMPORARY FENCING**

Code	L [mm]	W [mm]	H [mm]	Weight [Kg]	Hole [mm]
BA-TF	225	690	135	20 - 26	4x Ø45 / □60x60

## Road mirrors

Used in poor visibility conditions to improve the field of vision, they are manufactured in plastic material resistant to shocks, atmospheric agents, U.V.rays, and powders.

They consist of an orange polypropylene rear cavity fitted with a bracket in galvanized iron that allows the application to poles and/or shelves and from a front shatterproof convex mirror in aluminized acrylic material.

Ideal for dangerous crossings, parking exits, blind spots, it offers safety in the road traffic and prevention in the workplace.

The mirrored part, if hit by external objects causing it to break, does not shrink shattered. With red polypropylene visor with attachments for pole diam. 60mm.

Code	Diam [cm]
MS-50F	50
MS-60F	60
MS-70F	70
MS-80F	80
MS-90F	90





# Buffers and bumpers

## Buffers and bumpers for loading points

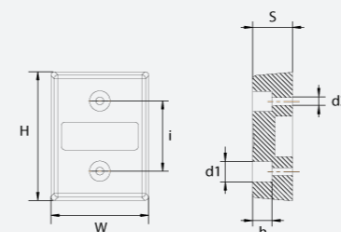


The bumper pads provide additional protection against damage to the cargo bay and vehicle. All of our buffers and bumpers are made of vulcanized rubber and are used to absorb shocks when approaching and moving vehicles away from the docks. They offer high resistance, are easy to transport, and are quick to install with fixing using dowels.

## Buffers and bumpers



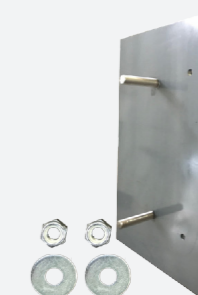
## Buffers and bumpers for loading points



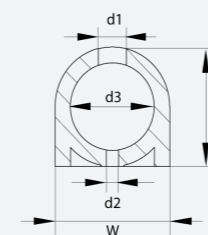
Code	H [mm]	W [mm]	S [mm]	Holes	i [mm]	d1 [mm]	h [mm]	d2 [mm]
DH-1310	330	250	102	2	180	52	50	20
DH-660	360	100	115	2	200	30	75	14
DH-1610	395	147	80	2	300	51,50	45	16
DH-1810	450	250	100	2	262,5	53	50	17
DH-1910	500	250	100	2	250	62	-	22
DH-1910-320	500	250	100	2	320	62	-	22
DH-1914	500	250	140	2	250	62	-	22

Upon request, a metal backplate can be supplied for all DH bumper models or with customized sizes. The plates include welded threaded pins, washers, and nuts of self-locking assembly.

Code	H [mm]	W [mm]	S [mm]	Pins	i [mm]	MxL [mm]
MP-644	320	90	8	3	125	M10X77
MP-1610	400	160	8	2	300	M12X85
MP-1810	470	270	8	2	262,5	M16X80
MP-1990	500	250	12	2	250	M20X60



## D-section rubber buffers



Code	L [mm]	W [mm]	H [mm]	Holes	i [mm]	d1 [mm]	d2 [mm]	d3 [mm]
DB-100	900	100	100	3	360	37	15,5	59
DB-150	900	150	150	3	360	38	16	109
DB-200	900	200	200	2	500	59	50x25	90x100

# Rubber sheets and curtain dock shelter



Rubber mats are suitable for general uses in the industrial and civil sectors and are used in various environments, in companies, and in commercial activities to cover and protect any surface from bumps and scratches.

The black or grey SBR rubber sheets are available in different thicknesses and finishes.

They can be cut and washed, they can be walked on and have good resistance against atmospheric agents, they are not suitable for heated floors.

The rubber curtains for the dock shelter guarantee the thermal seal of the loading portals, protect the goods from atmospheric agents, reducing energy consumption.

The technical canvas sheets are wear-resistant and adhere perfectly to the vehicle walls, adapting to trucks of any size.

Rubber plates are supplied in rolls or by the meter.

## Rubber rolls

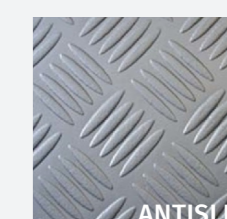
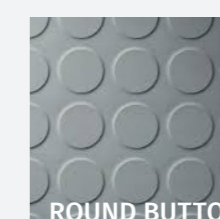
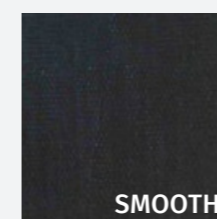
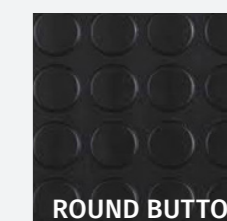
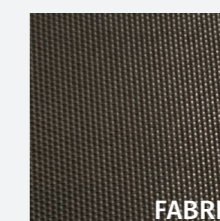
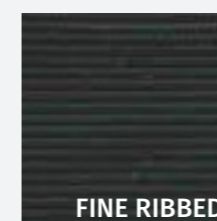
Code	Color	Finishing	Thickness [mm]	Width [m]	Lenght [m]	Weight [kg]
L3017	black	fine ribbed	3	1,20	10	45
L3018	black	wide ribbed	3	1,20	10	45
L3020	black	antislip	3	1,20	10	45
L3020-G	grey	antislip	3	1,20	10	45
L3056	black	round button	3	1,30	10	56
L3056-G	grey	round button	3	1,20	10	51
L3048-3	black	smooth	3	1,30	10	62
L3048-5	black	smooth	5	1,30/1,40	10	105/112
L3048-8	black	smooth	8	1,40	10	179
L3049-2	black	smooth 1 ply	2	1,30	10	42
L3049-4	black	smooth 1 ply	4	1,30	10	83
L3049-5	black	smooth 1 ply	5	1,40	10	112
L3049-8	black	smooth 1 ply	8	1,40	10	179
L3049-10-5 MT	black	smooth 2 ply	10	1,30	5	104

## Sheets

Code	Color	Finishing	Thickness [mm]	Width [m]	Lenght [m]	Weight [kg]
L3049X5X140X200	black	smooth 1 ply	5	1,40	2	22
L3049X8X140X200	black	smooth 1 ply	8	1,40	2	36

## Curtain dock shelter

Code	Color	Finishing	Thickness [mm]	Width [m]	Lenght [m]	Weight [kg]
L3050-3X06X14	black	fabric 2 ply	3	0,6	14	52
L3050-3X10X07	black	fabric 2 ply	3	1	7	35

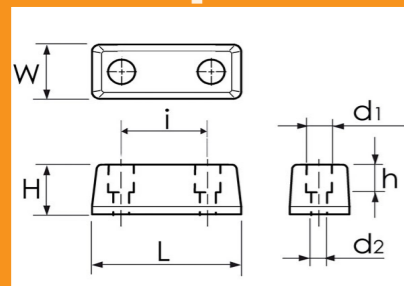




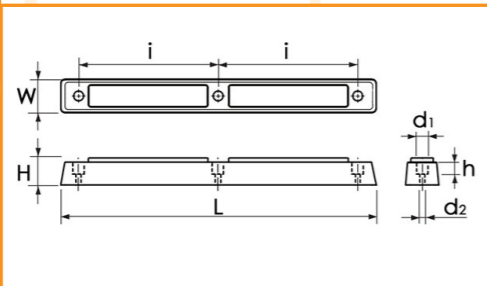
# Rubber bumpers for trucks and trailers



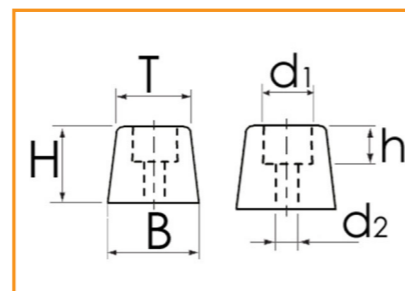
## Rubber square buffers



## Model 648



## Rubber conical buffers



## Rubber square buffers

Buffers and bumpers made of vulcanized rubber. Used on industrial vehicles on tail gates to absorb the shock against the docks during loading and unloading procedures.

Code	L [mm]	W [mm]	S [mm]	Holes	i [mm]	d1 [mm]	h [mm]	d2 [mm]
TAS50X30X13	50	30	13	2	24	12,5	9,5	7
TAS50X30X30F	50	30	30	2	24	12,5	10,5	7
TAM601B	50	30	38	2	24	12,5	10,5	7
BAT602	60	42	48	2	24	13	16	7
BAT578	150	60	55	2	90	25,5	24	13
BAT573	170	90	70	2	70	17,5	41	7
BAT650	200	80	80	2	90	28	34	14
BAT652	250	80	90	2	120	28	45	13
BAT577	300	60	60	3	120	26	27	13
BAT644	300	80	100	3	125	26	26	13



Code	L [mm]	W [mm]	H [mm]	N. fori	i [mm]	d1 [mm]	h [mm]	d2 [mm]
BAT648C	460	48	40	3	202	14	14,5	7
BAT648L	670	48	40	4	205	14	14,5	7



## Rubber conical buffers

Code	B [mm]	T [mm]	H [mm]	d1 [mm]	h [mm]	d2 [mm]
TAM601	30	25	13	15,5	7	6,5
TAM331	50	40	60	16	21	7
BAT706	68	60	50	20	25	10,5
BAT623	100	81	80	36	40	11,5



## Rubber/Steel tipper plates

Rubber and iron plates for tippers and cargo beds.

Code	B [mm]	T [mm]	H [mm]
PIA8896	200	44	4/22
PIA8895	200	88	4/22



## Rubber caps

Rubber end-caps and profiles for section bars.  
Used on industrial vehicles.

Code	L [mm]	W [mm]	H [mm]
TAM305	100	25	27
TAM372	125	30	33
TAPPO556	100	30	25



## Rubber coverings

Rubber covering and conduits for cables.

Used on vehicles electrical system to protect cables from attrition and increase insulation.

Code	L [mm]	Di [mm]	De [mm]
CAP653	43	8	15
CAP654	55	16	20
CAP655	68	25	30
CAP656	70	15	35X55



## Elastic rubber bands

Elastic rubber bands for various uses.

Available in 2 versions: with or without hooks. ( Upon request model A/B/C/D)

### 2-flap strap



Code	H [mm]	W [mm]	Finishing	Hole diam. [mm]
CINGHIA672	60	25	ribbed	4

### 1-flap strap

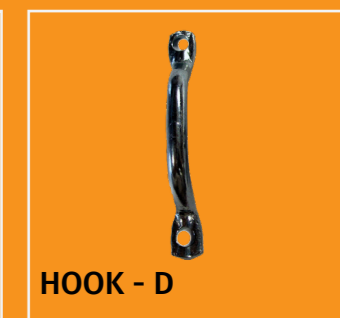
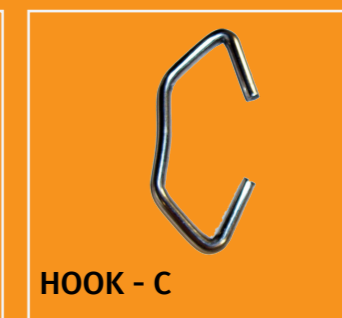
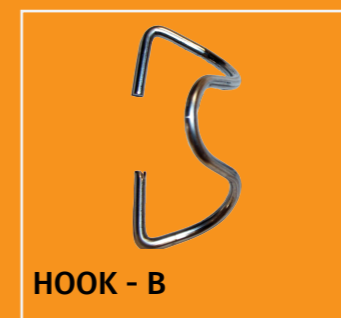
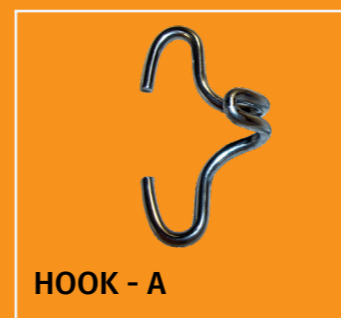


Code	H [mm]	W [mm]	Finishing	Hole diam. [mm]
CINGHIA1350	145	28	ribbed	3
CINGHIA1359	240	28	ribbed	3
CINGHIA2509	350	28	ribbed	3

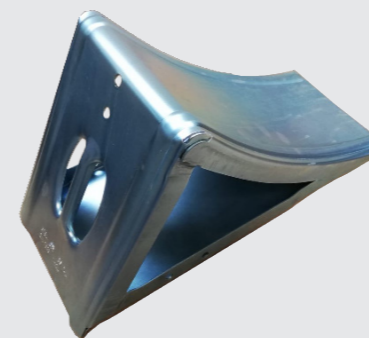
### Plain belt



Code	H [mm]	W [mm]	Finishing	Hole diam. [mm]
CINGHIA244	320	25	smooth	2
CINGHIA201	325	45	smooth	2



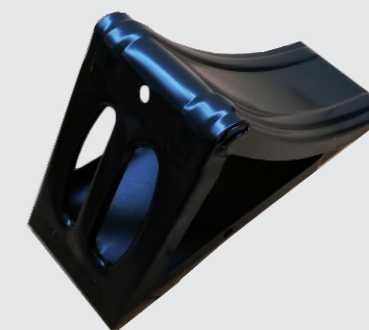
# Wheel chocks and wedges



### SMALL METAL CHOCK

Material: white galvanized steel

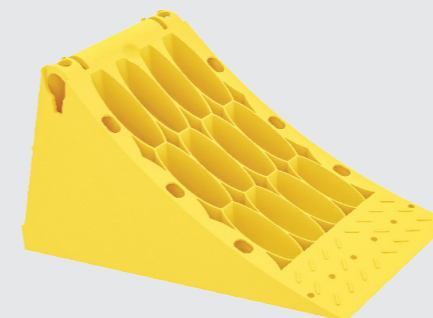
Code	R [mm]	A [mm]	B [mm]	C [mm]
MWC-36Z	360	320	120	150



### SMALL METAL CHOCK

Material: black painted steel

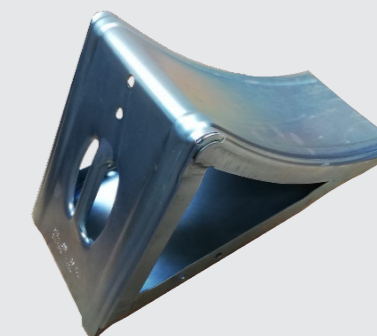
Code	R [mm]	A [mm]	B [mm]	C [mm]
MWC-36N	360	320	120	150



### MEDIUM POLYPROPYLENE CHOCK

Material: yellow polypropylene

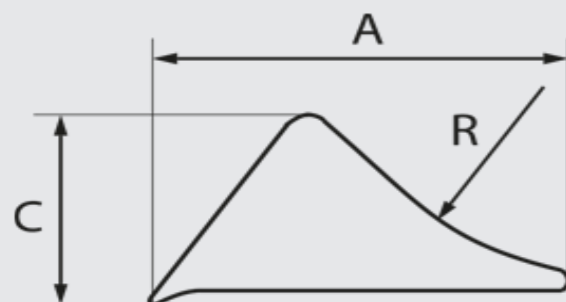
Code	R [mm]	A [mm]	B [mm]	C [mm]
PWC-46Y	460	380	160	190



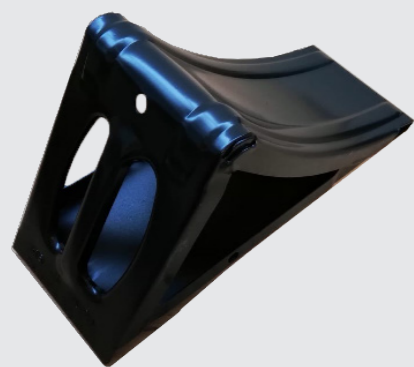
### MEDIUM METAL CHOCK

Material: white galvanized steel

Code	R [mm]	A [mm]	B [mm]	C [mm]
MWC-46Z	460	385	155	180

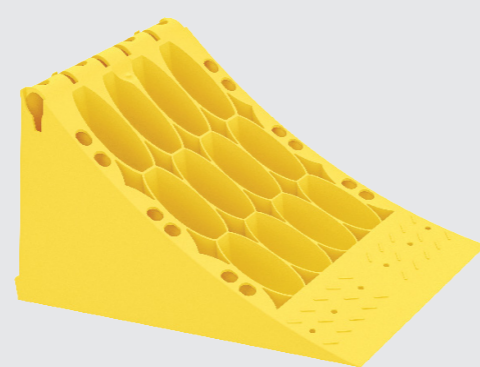




**MEDIUM METAL CHOCK**

Material: black painted steel

Code	R [mm]	A [mm]	B [mm]	C [mm]
MWC-46N	385	380	155	180

**LARGE POLYPROPYLENE CHOCK**

Material: yellow polypropylene

Code	R [mm]	A [mm]	B [mm]	C [mm]
PWC-53Y	560	470	200	230

**PARKING CHOCK**

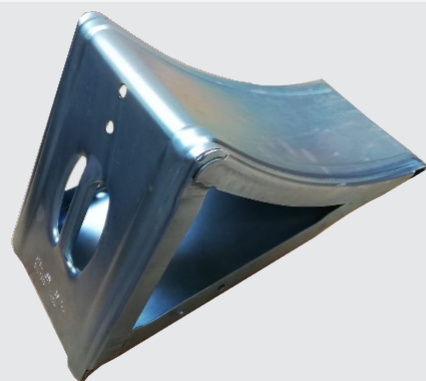
Material: yellow polypropylene

Code	A [mm]	B [mm]	C [mm]
PWC-1	210	150	115

**PARKING RUBBER CHOCK**

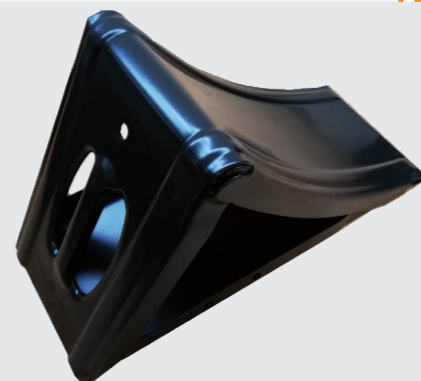
Material: black rubber with yellow reflectors

Code	A [mm]	B [mm]	C [mm]
WC-1	250	160	190

**LARGE METAL CHOCK**

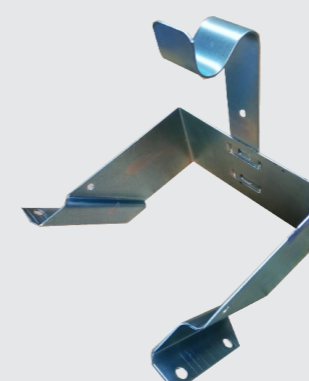
Material: white galvanized steel

Code	R [mm]	A [mm]	B [mm]	C [mm]
MWC-53Z	560	470	200	230

**LARGE METAL CHOCK**

Material: black painted steel

Code	R [mm]	A [mm]	B [mm]	C [mm]
MWC-53N	560	470	200	230

**METAL SUPPORT FOR SMALL CHOCK**

Material: white galvanized steel

Code
SWC-36Z

**METAL SUPPORT FOR SMALL CHOCK**

Material: black painted steel

Code
SWC-36N



#### METAL SUPPORT FOR MEDIUM CHOCKS

Material: white galvanized steel

---

#### Code

SWC-46Z

---



#### METAL SUPPORT FOR LARGE CHOCKS

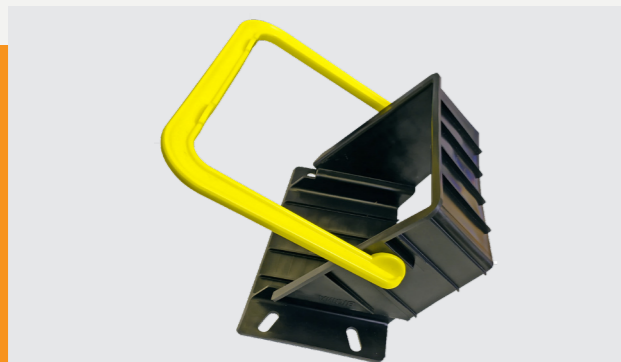
Material: white galvanized steel

---

#### Code

SWC-53M

---



#### THERMOPLASTIC SUPPORT FOR LARGE CHOCKS

Material: black thermoplastic

---

#### Code

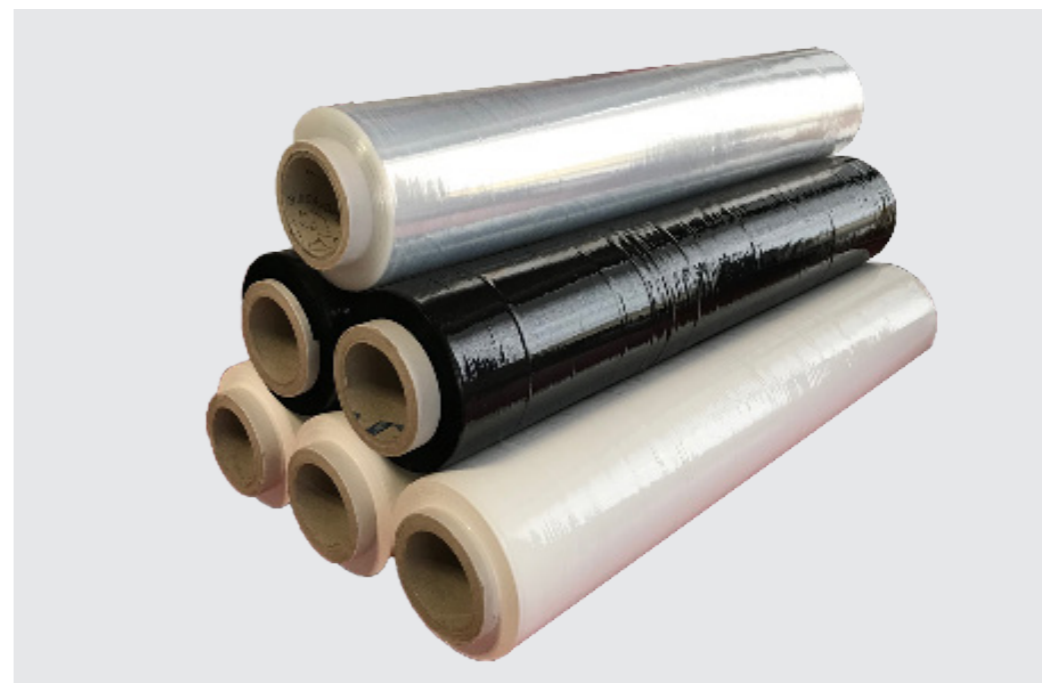
SWC-53T

---





## Stretch film



Stretch film in polyethylene for manual use, elastic, tear-resistant, has the high self-adhesive ability from the inside: the stretch film allows a good fixing of the pallets and allows stability during transport.

Protects goods from atmospheric agents and dust during material storage.

Available in colors: **transparent, opaque white, and black.**

The transparent color allows quick identification of the packaged product, while white or black color prevents the contents of the pallet from being seen.

**Packaging:** box of 6 pcs

**Coil height:** 50 cm

**Core:** in cardboard  $\varnothing$  inside 50 mm

**Weight kg:** 2.60 / transparent reel  
2.50 / white or black reel

**Thickness:** 23 microns

# Carts for the manual handling



## MODEL 111

Iron frame  
Pneumatic wheels



Code	H [mm]	W [mm]	L [mm]
------	--------	--------	--------

H2PN250-111	1200	500	540
-------------	------	-----	-----

Platform dimensions: 300 x 245 mm  
Load capacity: 250 Kg  
Trolley weight: 10 Kg  
Spare wheel: PR1805-4



## MODEL 111

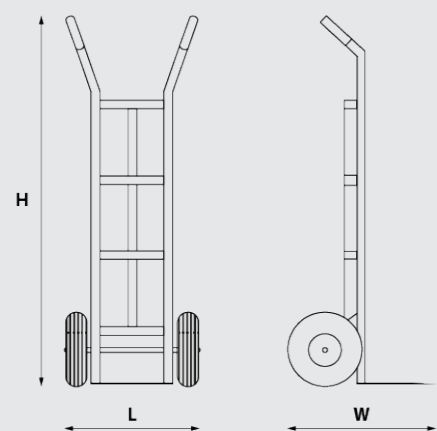
Iron frame  
Anti-puncture wheels



Code	H [mm]	W [mm]	L [mm]
------	--------	--------	--------

H2PU150-111	1200	500	540
-------------	------	-----	-----

Platform dimensions: 300 x 245 mm  
Load capacity: 150 Kg  
Trolley weight: 10 Kg  
Spare wheel: FFP1105R



## 2-WHEEL TROLLEYS IN IRON OR ALUMINUM

Complete with pneumatic or anti-puncture wheels and non-slip and safety knobs.  
Diameter of the tube: 25 mm  
Thickness of the tube: 1,2mm

## MODEL 114

Iron frame  
Pneumatic wheels



Code	H [mm]	W [mm]	L [mm]
------	--------	--------	--------

H2PN160-114	1130	425	555
-------------	------	-----	-----

Platform dimensions: 350 x 200 mm  
Load capacity: 160 Kg  
Trolley weight: 10 Kg  
Spare wheel: PR1804-20

## MODEL 113

Iron frame  
Pneumatic wheels



Code	H [mm]	W [mm]	L [mm]
------	--------	--------	--------

H2PN200-113	1280	500	540
-------------	------	-----	-----

Platform dimensions: 350 x 260 mm  
Load capacity: 200 Kg  
Trolley weight: 10 Kg  
Spare wheel: PR1805-4

## MODEL 113

Iron frame  
Anti-puncture wheels



Code	H [mm]	W [mm]	L [mm]
------	--------	--------	--------

H2PU150-113	1280	500	540
-------------	------	-----	-----

Platform dimensions: 350 x 260 mm  
Load capacity: 150 Kg  
Trolley weight: 10 Kg  
Spare wheel: FFP1105R

**MODEL 101AL**

Aluminum frame  
Pneumatic wheels



Code	H [mm]	W [mm]	L [mm]
H2PN180-101AL	1170	475	480

Platform dimensions: 300 x 205 mm  
Load capacity: 180 Kg  
Trolley weight: 6,80 Kg  
Spare wheel: PR1805-4

**MODEL 101AL**

Aluminum frame  
Anti-puncture wheels



Code	H [mm]	W [mm]	L [mm]
H2PU150-101AL	1170	475	480

Platform dimensions: 300 x 205 mm  
Load capacity: 150 Kg  
Trolley weight: 6,80 Kg  
Spare wheel: FFP1105R

**MODEL 103AL**

Aluminum frame  
Pneumatic wheels



Code	H [mm]	W [mm]	L [mm]
H2PN200-103AL	1110	470	540

Platform dimensions: 340 x 205 mm  
Load capacity: 200 Kg  
Trolley weight: 6,50 Kg  
Spare wheel: PR1805-4

**MODEL 103AL**

Aluminum frame  
Anti-puncture wheels



Code	H [mm]	W [mm]	L [mm]
H2PU150-103AL	1110	470	540

Platform dimensions: 340 x 205 mm  
Load capacity: 150 Kg  
Trolley weight: 6,50 Kg  
Spare wheel: FFP1105R



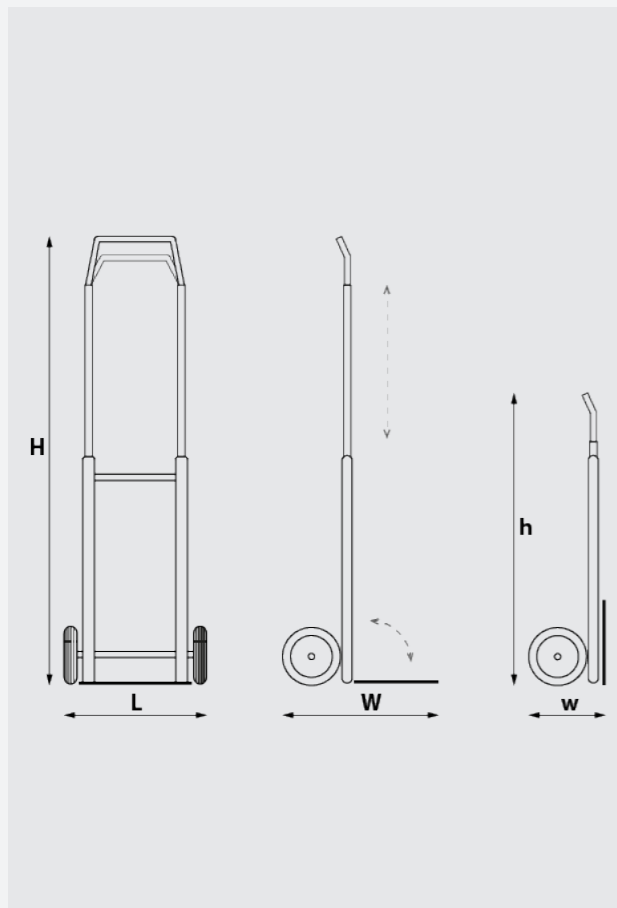
**Pneumatic wheels**

Code				
	[mm]	[mm]	[mm]	[mm]
PR1805-4	260	85	20	75
PR1804-20	260	85	20	50 offset

**Anti-puncture wheels**

Code				
	[mm]	[mm]	[mm]	[mm]
FFP1105R black/blue/yellow	263	73	20	75





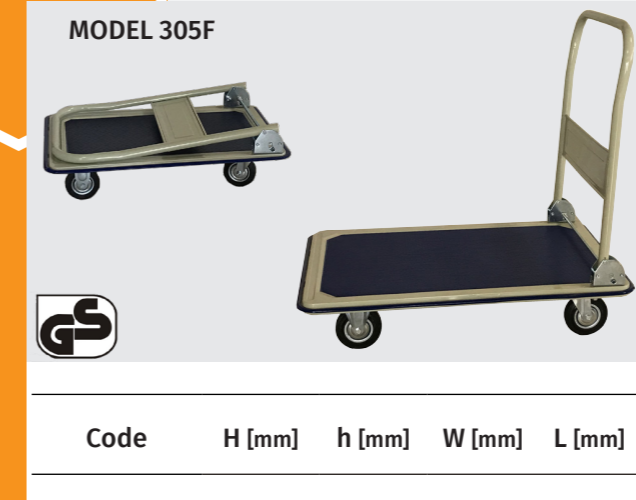
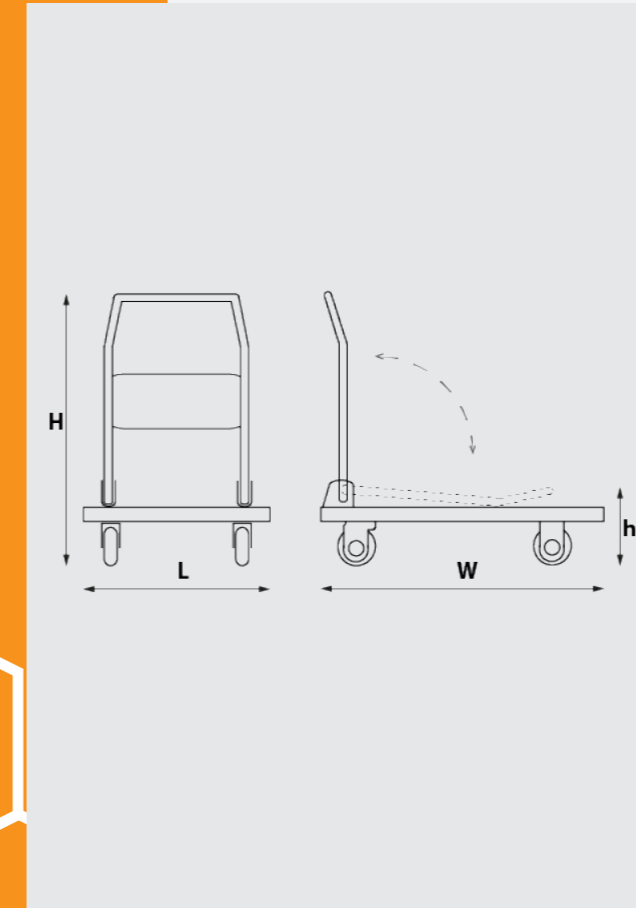
Code	H [mm]	h [mm]	L [mm]	W [mm]	w [mm]
H2RN100-201F	1110	735	390	410	190

Trolley with aluminum frame  
 Complete with 2 rubber wheels diam. 150mm  
 Load capacity: 100 Kg  
 Platform size: 350 x 240 mm  
 Trolley weight: 5,80 Kg  
 Packaging: 72x41x15 cm - 6,50 Kg



Code	H [mm]	h [mm]	L [mm]	W [mm]	w [mm]
H2PP50-310F	970	450	260	340	110

Extra light trolley  
 Complete with 2 polypropylene wheels  
 Load capacity: 50 Kg  
 Trolley weight: 1,90 Kg  
 Packaging: 45x26x11 cm - 2 Kg



Code	H [mm]	h [mm]	W [mm]	L [mm]
H4RN300-305F	870	275	907	608

Platform trolley  
 Complete with 4 rubber wheels diameter 125 mm (2 fixed and 2 swivels wheels)  
 Edges covered in rubber  
 Load capacity: 300 Kg  
 Platform size: 907x608  
 Trolley weight: 7,50 Kg  
 Packaging: 92x63x14 cm - 13,50 Kg



Code	H [mm]	h [mm]	W [mm]	L [mm]
H4RN150-301F	820	235	725	472

Platform trolley  
 Complete with 4 rubber wheels diameter 100 mm (2 fixed and 2 swivels wheels)  
 Edges covered in rubber  
 Load capacity: 150 Kg  
 Platform size: 725x472  
 Trolley weight: 7,50 Kg  
 Packaging: 73x49x12 cm - 8,50 Kg



Code	H [mm]	W [mm]	L [mm]
H4RN100-901	820	840	410

Multi-purpose trolley  
 Complete with 4 black rubber wheels diameter 125mm (2 fixed and 2 swivels wheels)  
 Three shelves with rubber mat  
 Red frame  
 Load capacity: 100kg  
 Shelf size: 740x385x85cm  
 Trolley weight: 18kg - Packaging: 88x44x12cm - 19kg

NOTE

Lined writing area for notes.

# Other products



Industrial wheels



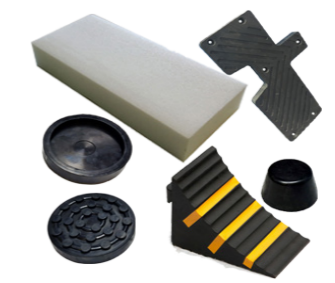
Furniture wheels



Pneumatic wheels



Buffers and bumpers



Garage equipment



Industrial supplies



Via Zacchetti, 725027 - Quinzano d'Oglio (BS) - Italy

Phone: +39.030.9924140

E-mail: [info@artradesrl.it](mailto:info@artradesrl.it)

WebSite: [www.artradesrl.it](http://www.artradesrl.it)



C 01/C4

Celebriamo con orgoglio i nostri 20 anni di attività, un percorso caratterizzato dalla flessibilità, dalla qualità e dall'esperienza che hanno reso possibile ogni nostro successo